

Find hidden costs *before* you make the part

DFMPro

DFMPro is an easy-to-use Design for Manufacturability (DFM) tool for designers, cost estimators, and manufacturing engineers.

By utilizing this revolutionary software in conjunction with Micro Estimating's Feature Recognition Estimating, you will significantly enhance accurate costing and production planning.

Now you can find the hidden costs before you make the part.

With DFMPPro, you can easily identify costly manufacturing operations.



DFMPPro is an easy-to-use Design for Manufacturability (DFM) tool for designers, cost estimators, and manufacturing engineers.

By utilizing this revolutionary software in conjunction with Micro Estimating's Feature Recognition Estimating, you will significantly enhance accurate costing and production planning.

What it does

DFMPPro facilitates manufacturability validation and identification of areas of a design that are difficult, expensive, or impossible to manufacture. It also will identify errors in drawings prior to manufacturing.

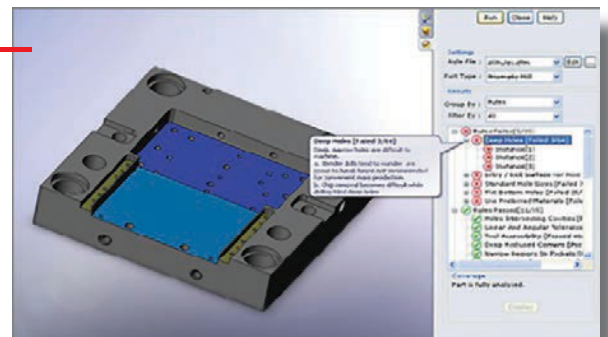
DFMPPro performs common manufacturability checks related to machining (milling, turning, sheet metal fabrication, manufacturing tolerance and part attributes). It provides reasons and suggestions on manufacturability issues; the software is pre-populated with common manufacturing rules that can be user configured. DFMPPro generates complete analysis reports, including images of the difficult and costly operations.

DFMPPro comes ready to use and is economically priced. The return on investment could be immediate based on just one item, where DFMPPro identified cost savings and the recommendations are implemented.

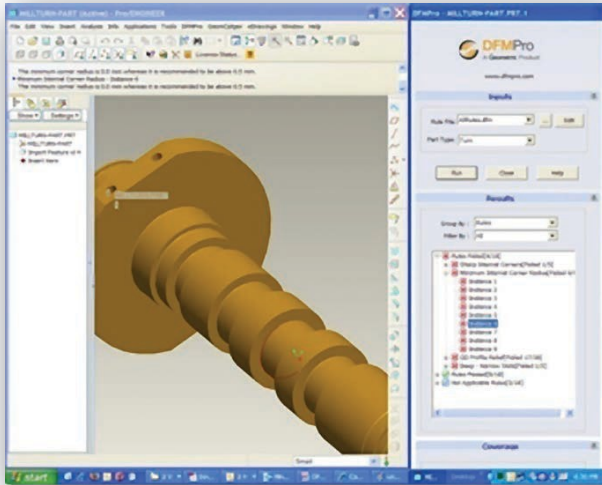
Easily identify costly operations

On this part, DFMPPro easily identified the costly operations and highlighted problem features with red "X's". In addition, common sense manufacturing rules are suggested for cost reductions and quality improvement.

This part has over 100 machining operations. DFMPPro utilizing its machining rules knowledge base found problem areas in just seconds.



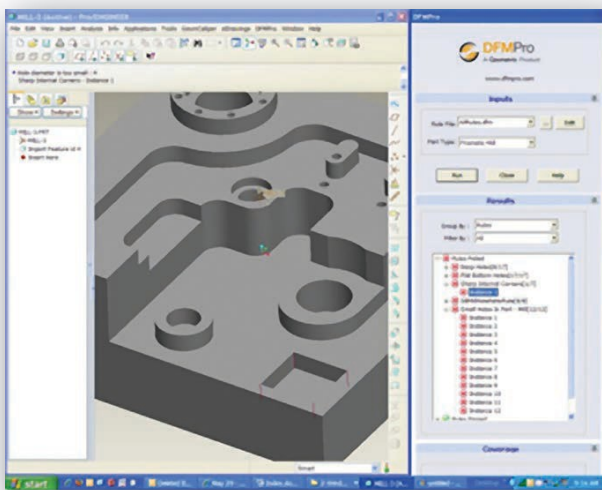
DFMProExamples



Turning

DFM identified several part features with small corner radiuses that will require addition operations.

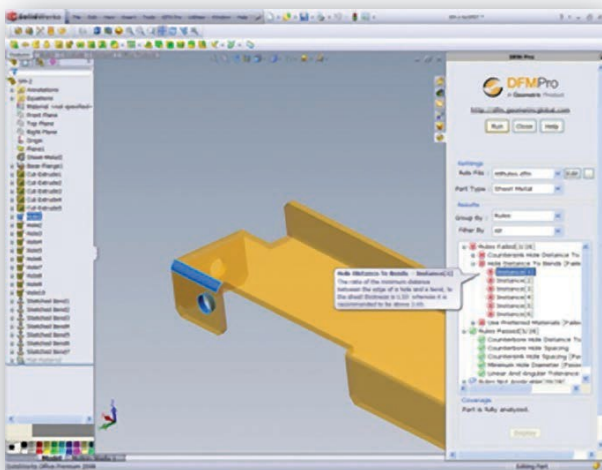
Out of the Box Standard Turning Rules for checking manufacturing feasibility: Blind Hole Relief, Keyways should have end radii, Long - Slender Turned Parts, Minimum Internal Corner Radius, OD Profile Relief, and more ...



MachiningCenter

On this operation, DFM identified holes with internal sharp corners that will be difficult to machine.

Out of the Box Machining Center Rules: Deep - Narrow Slots, Deep Radiused Corners, Fillets on Top Edges, Narrow Regions in Pockets, Non Uniform Draft Features, Pockets with Bottom Chamfers, Sharp Internal Corners, Tool Accessibility and more ...



SheetMetal

On this part, DFM identified that the specified bend of a corner radius is too small, for the material thickness.

Out of the Box Sheet Metal Rules: Hole Distance to Bends, Minimum Hole Diameter, Multiple Bends in Same Direction, Counterbore Hole Distance to Part Edge, Counterbore Hole Spacing, Counterbore Hole to Bend Distance, Countersink Hole Distance to Part Edge, Distance Rolled Hem Parameters and more ...

Make more money in less time with MicroEstimating

Manufacturing success means beating the competition, not yourself. To be profitable, you must be accurate, flexible and fast.

Overpriced estimates eliminate you. Even worse, getting the contract with numbers that don't account for everything shreds profits. One project running on bad numbers means that the next five profitable jobs are just making up for the loss.

Get profitable right now with MicroEstimating

MicroEstimating has been helping small and large businesses improve profitability for the nearly four decades. With Micro on your side, you can see more profits by improving efficiency and accuracy in cost estimating.

And if that's not enough, you'll start delivering lightning fast, deadly accurate quotes to your customers at a speed that puts you in the front of the line every time.

MicroEstimating increases profitability and accuracy from the minute you start using our proprietary cost estimating software. Whether you are an Original Equipment Manufacturer, Contract Manufacturer, Job Shop, or a buyer of custom parts requiring Should Costing, our manufacturing cost estimating software can be tailored and calibrated to fit any estimating or costing requirements.

Partners & Integration

- Camworks
- Epicor
- Global Shop Solutions
- Henning Software
- Microsoft
- MIE Solutions
- ProfitKey
- Realtrac
- Shoptech
- SolidWorks

*Partner Brands are trademarks of their respective companies and do not necessarily constitute an endorsement by any party.



MicroEstimating

MICRO ESTIMATING SYSTEMS, INC.
200 S VIRGINIA ST, STE 800
RENO NV 89501

Phone 262.860.0560

E-Mail SALES@MICROEST.COM

www.microest.com